

HUMANITIES SUMMMER TERM 2

Responding to a major tectonic event Part 2.

(Year 9 and 10)



Task 1.

Volcanic eruption report.

Research using the internet a volcanic eruption that has taken place, anywhere in the world, within the last 40 years.

Your report should include the following:

- **Geographic information:**
 - Where in the world the volcano is;
 - What tectonic plates the volcano is on;

- **Specific features of the eruption:**
 - How many casualties it caused;
 - How much damage to roads, railways, buildings, etc. it caused;
 - How did the eruption effect businesses:
 - in the local area,
 - Around the world.

- **Evidence that proves the above (best way is to use photos and pictures).**

How to prepare your report:

1. Stick with just one case study eruption. See the list below if you are having trouble finding one:

- Mount St.Helens, USA (1980)
- Monserrat, Caribbean (1995-1998)
- Eyjafjallajokull, Iceland (2010-2011)

2. Use pictures as evidence of what you are writing about.

Carefully select evidence ensuring that it is of the volcano you are talking about. You may also find that there are diagrams, charts, maps and table that could help you to explain.

Make sure that all of your evidence has annotations, (where you show me how useful it is showing something you wanted to prove).

3. DO NOT CUT AND PASTE ANY WRITING OFF OF THE INTERNET.

Task 2.

Disaster recovery.

You have been placed in charge of the relief effort to help the island of Hawktown recover from a major earthquake.

Using the resources provided you will need to plan a short and long term strategy for helping the island to recover and 'get back to normal'.

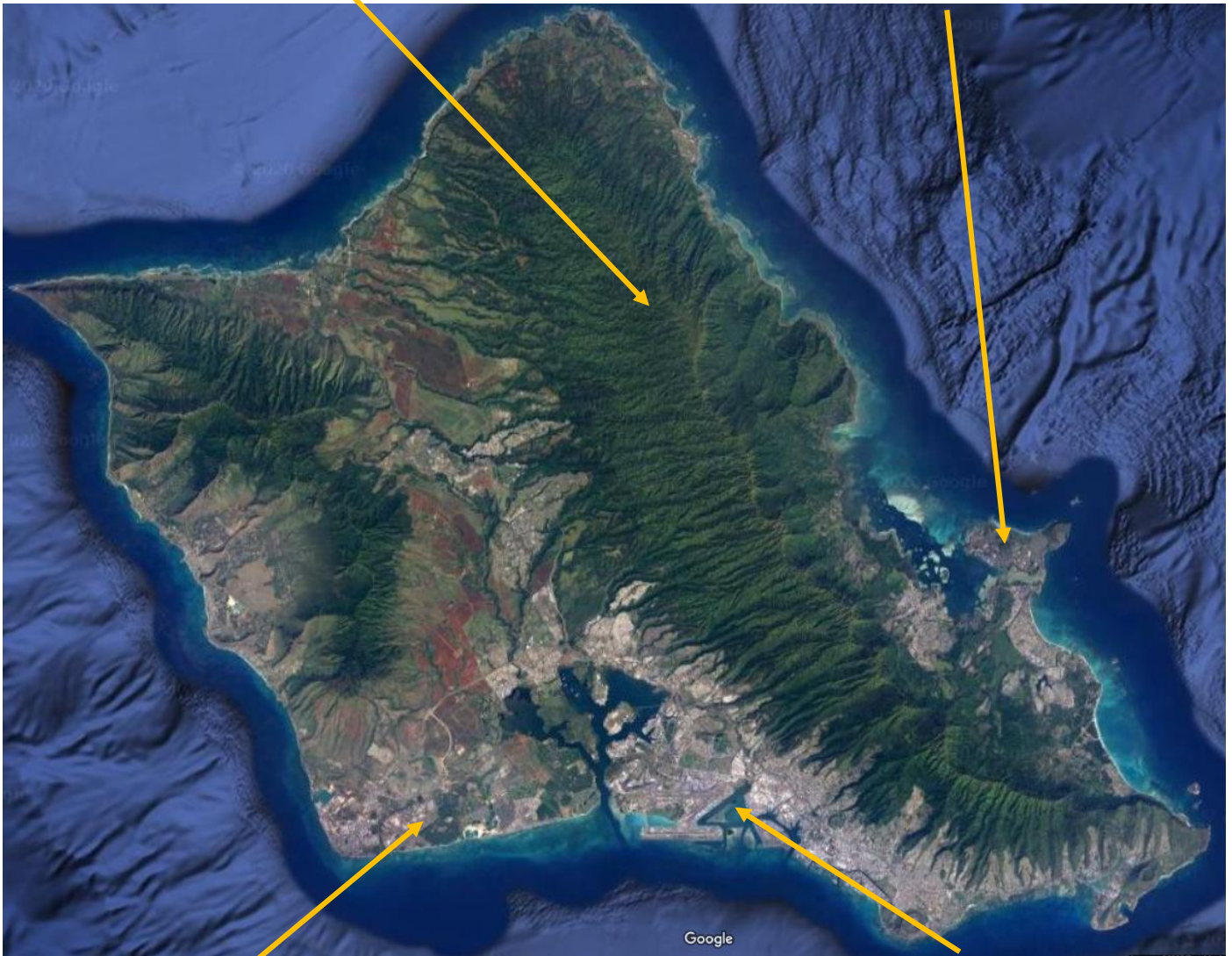


Nature reserve.

High, forested mountains running the length of the island. Many species of bird that are only found on the island live here

Hotels.

Luxury hotels (5) capable of accommodating up to 3000 guests at once. Also many smaller businesses (bed & breakfast, Hostels, etc)



Airport

The airport in Hawkstown Island can deal with only light to medium aircraft. It services three flights to neighbouring islands per week. This goes down to just one per week in the winter.

Hawktown City

Hawktown City is a build up urban environment. Total population 10,000. It has:

- A medium sized hospital
- A police force of 500
- A fire service of 35 units
- 5 schools
- 3 Sports centres
- Port

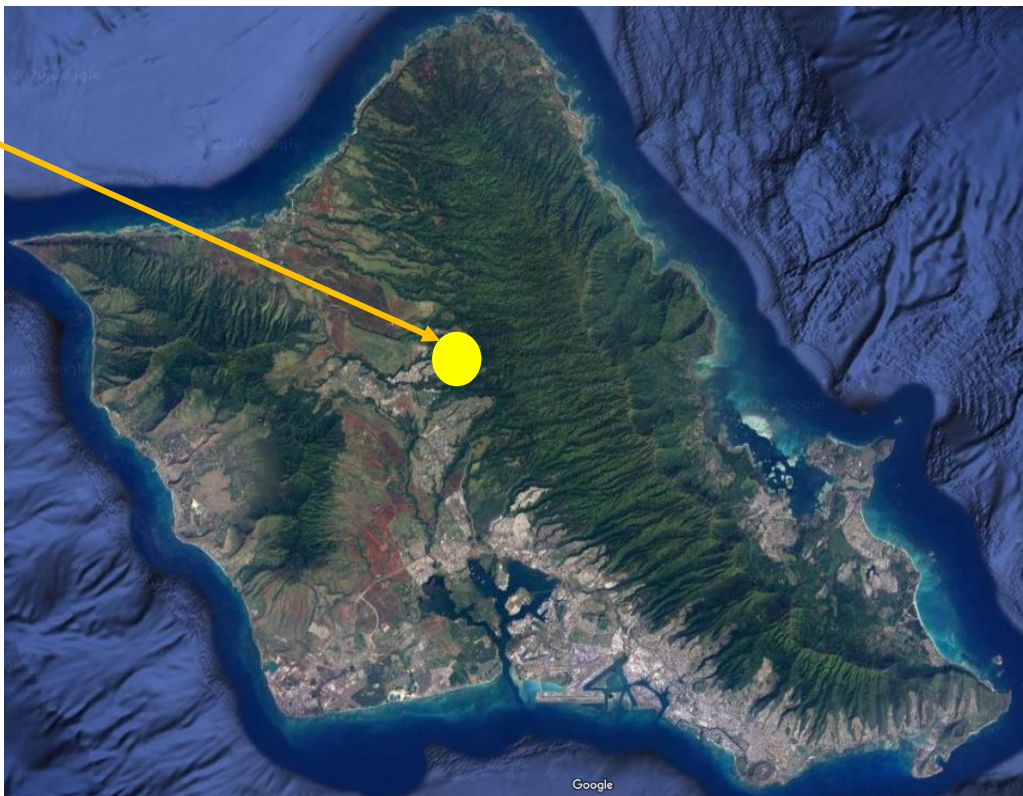
Other information:

- **Hawktown island can store and has only enough petrol saved for one week once imports stop.**
- **The Hospital has enough medical supplies for 4 weeks.**
- **The police and fire services are trained in emergency first aid procedures.**
- **The fire service has 10 emergency rescue teams that specialise in helping people buried, mountain rescue and lifeboat/coastguard duties.**
- **There is only one coal powered power station on the island.**

EARTHQUAKE !

At 7.32 am on Monday morning, the island of Hawktown was hit by an earthquake that registered 8 on the Richter scale! There is widespread destruction and potential loss of life but, this is only on the immediate effect.

Epicentre



Immediate consequences of the earthquake (within 5 days)

- **Hawktown city:**
 - The hospital has sustained considerable damage and can only deal with half the number of patients it is capable of normally.
 - There is a 35% casualty rate of either dead, dying or seriously injured people.
 - There is a 60% rate of inhabitants who have sustained minor injuries (broken limbs, minor head wounds, cuts, bruises, etc.)
 - 75% of buildings in Hawktown city are uninhabitable. Some are dangerously unstable and will probably collapse.
 - Water and electricity has been disconnected.
- **Other Hawktown facilities:**
 - The airport is completely unusable.
 - The port has only sustained minor damage.
- **Other damage:**
 - There have been several rock falls that have block the roads between the hotels and the rest of the island. There is the danger that there could be more rockfalls.
 - Several smaller villages in the north west of the island need medical help and supplies as they also have no water and electricity.

Immediate aid.

1. Make a list in order of priority for what you will do first in the 5 days following the earthquake.

NOTE: you will need to take into account the resources you have available and the details of what damage has been done that might prevent you from getting to people.

Top priority: _____

why: _____

2nd: _____

why: _____

3rd: _____

why: _____

4th: _____

why: _____

Within a few months.

1. Make a list in order of priority for what you think will need to be done in the following 6 weeks after the earthquake.

Consider the following:

- Tourism
- Getting businesses working again
- Providing public services — e.g. water, electricity, roads, sewage.

Top priority: _____

why: _____

2nd: _____

why: _____

3rd: _____

why: _____

Long term.

1. What should be done to reduce the risk to Hawktown from future earthquakes?

Task 3.

Create a campaign to raise money for disaster relief for Hawktown.

In your campaign you need to consider the following:

1. What can individual people in the UK do to help the people in Hawktown?
